

St. Conleth's TOWARDS 100
College

First Phase: The Coach House Development



St. Conleth's
College

I am delighted to launch the **TOWARDS 100** appeal's first phase:
The Coach House Development.

In 2019 we finally succeeded in purchasing the original Coach House of No. 28 Clyde Road: this will now enable us to complete a quadrangle, consisting of the original house, Clyde Lane and the school extension. This new St. Conleth's will be stunning and dynamic to see and to experience, but still very much at home in its snug corner of the Ballsbridge landscape.

Our vision for The Coach House includes a science and technology hub; an auditorium where lectures, concerts and debates can take place; a sacred space to encourage quiet reflection, prayer, mindfulness and wellbeing; and extended art facilities, as well as new learning spaces for our pupils. I am especially thrilled that this development will honour both Michael Manning, an esteemed colleague and friend and a science teacher with a world-wide legacy, and Patricia Kelleher, my mother and the guiding light of St. Conleth's ethos and development for so many years.

The St. Conleth's Development Programme was initiated in 2002, and the school facilities which our pupils enjoy today were made possible through the generosity of the families who came before. My goal is to provide the educational leaders of St. Conleth's with the best possible facilities so that they and their staff can ensure that our students reach both their personal and academic potentials. We plan to fund this development through an annual voluntary donation rather than through major fee increases and we need the support of all to do so.

Ann Sheppard, *former C.E.O.*

Donal Ó Dúlaing, Senior School Principal,
Ann Sheppard, former C.E.O.
and Tony Kilcommons, C.E.O.
with the design proposal





St. Conleth's College will stay at **28 Clyde Road** close to the heart of the city and will grow in size and quality of facilities, but not in numbers of students.

- one class per year in the Junior and Preparatory Schools
- two classes per year in the Senior School.





Our 'footprint' is adjusting considerably to meet the demands of co-education and a more interactive and expansive curriculum.

Tune in

continue St. Conleth's meteoric rise up the charts as a school that puts music and performance at the heart of all our communal activities, in spaces that amplify our efforts

Spark the left

side, too, with a more measured inventiveness, one that blossoms under the bright lights and swirling gasses of laboratory classes



Stimulate the right

side of the brain as we continue to capture both that natural light of Ballsbridge skies and the inner light of young creative minds



Play

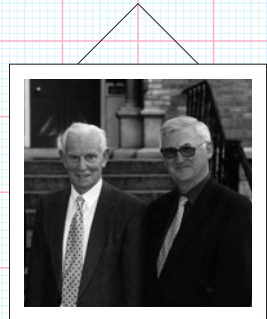
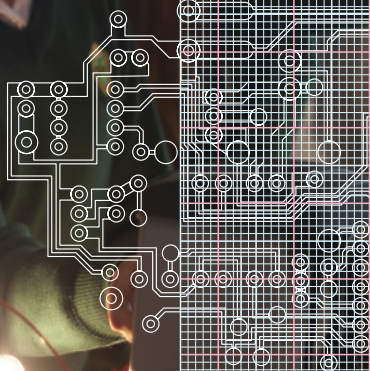
We have always educated the whole child, and will continue to promote physical fitness and sporting prowess as necessities for personal growth



Creating new learning spaces,
agile and **flexible** enough to encourage the groupwork and collaborative learning
which are becoming central to the way students learn.



Like in all subjects, **STEM** knowledge is no longer just dispensed from the teacher at the top and absorbed by the pupils. Learning is often in **partnerships** and 'hands-on'.

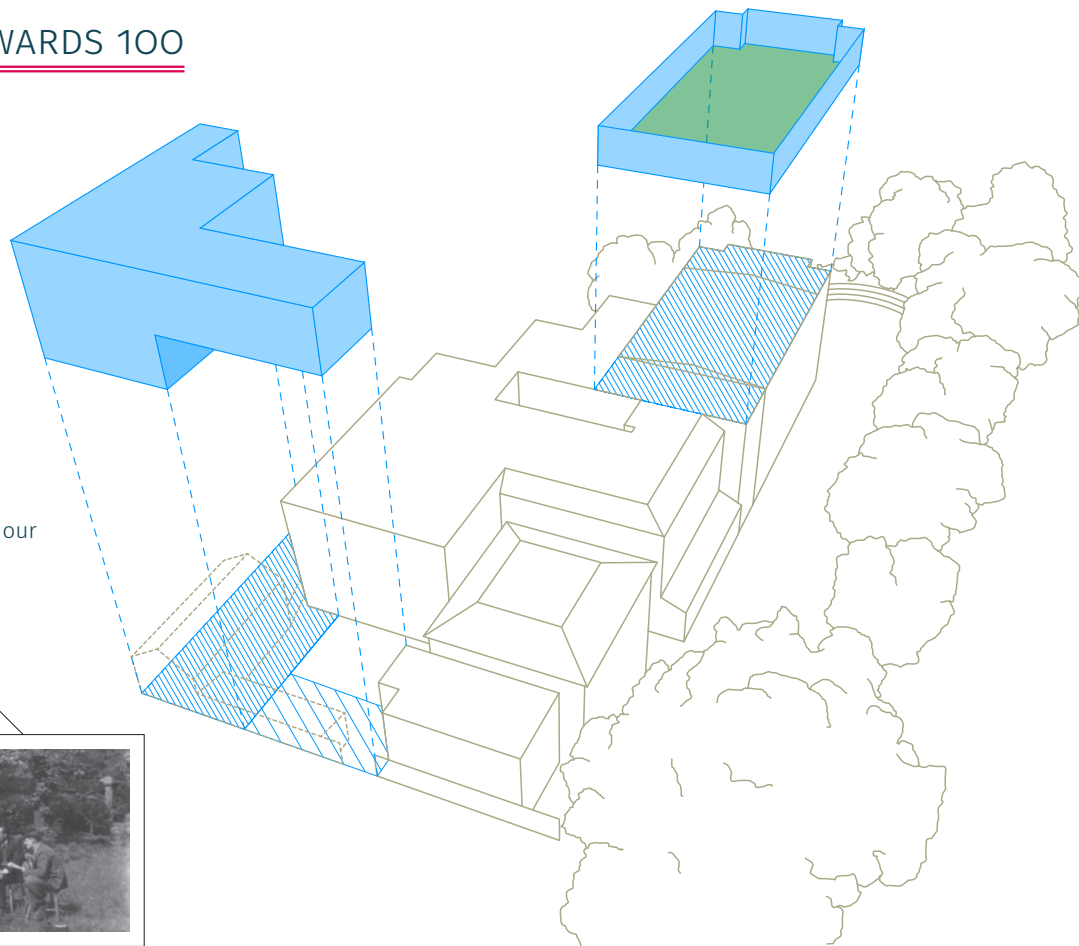


St. Conleth's College TOWARDS 100

'Chalk and talk' is simply no longer enough and must be updated and upgraded. Quality education adjusts with the changing world and St. Conleth's has always kept up with the times, holding on to the **best of the past** and melding it with **modern facilities**.

In education, **the future is always now**, and we as a school must continue to re-imagine, improve and adapt our facilities to create learning spaces that suit the new curricula and, even more importantly, the changing demands of the 'real world' beyond our cosy, warmly painted walls.

We believe we already have the necessary innovative people and will continue to attract more: it is the 'place' that needs to continue to grow to meet this demand.



First Phase: **The Coach House Development**

The heart (and engine) of our new extension will be a **STEAM Facility**. Our laboratory of yore was small but mighty and it spawned enough big bang theorists to fill the university staffs of several continents. More recently, the revamped lab has inspired Young Scientist and SkyFest Champions. Imagine what our lab-coated and safety-goggled boy and girl stemmers will come up with next? The extension will have state-of-the-art laboratory facilities and accompanying preparation and lecture rooms. The adjacent **Technology Creativity Hub** will accommodate those of inventive and collaborative tendencies.

Our extension will include larger classrooms which will be more adaptable and agile: true Learning Spaces, adjustable to the task at

hand, whether it be individual, collaborative or group learning. Natural light will bathe our creators and their creations in our new Art Room and the view will be inspiring. Technology will play its part as research and presentation skills become more important to every discipline. The facility will honour the many inspirational science and maths teachers who have taught in St. Conleth's, among them the legendary Michael Manning, who educated a generation of world renowned mathematicians and physicists.




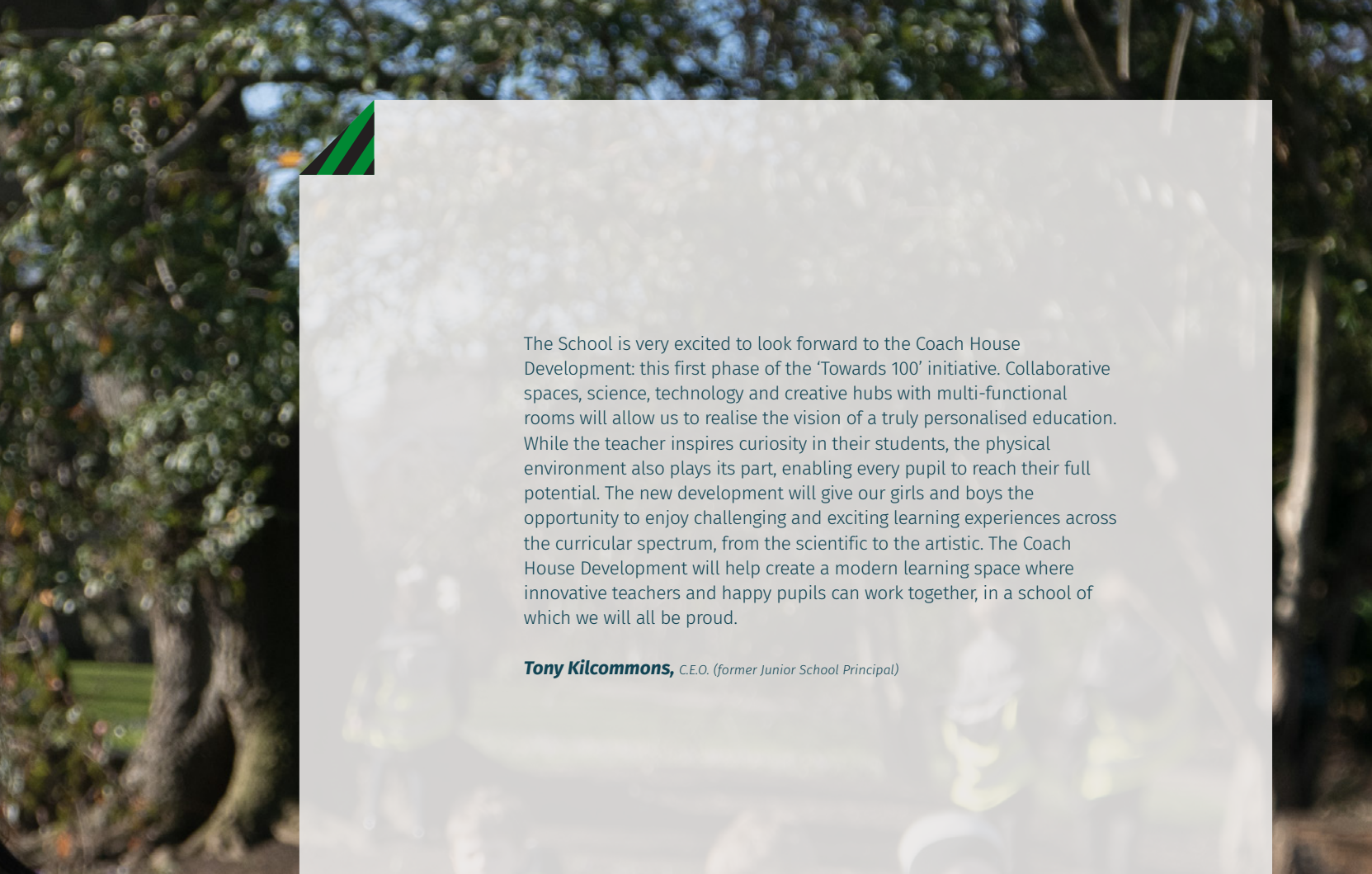


Many will remember fondly the hotly, and humorously, contested debates of yesterday. This great Conlethian tradition of rhetorical success (and excess) will have a new home and points of information, order and hilarity will be resounding off the paneled walls of our new **Auditorium and Debating Chamber**.

This facility will be named after **Patricia Kelleher**, who oversaw the constant improvement of St. Conleth's College for nearly seventy years.

And when all that speechifying gets to be just too much, students and teachers may

retreat into a purpose-built Sacred Space, where Prayer, Mindfulness and Wellbeing emanate inwards and outwards. Mr. Kelleher would have made a few jokes at such a proposal a few years ago, but our esteemed late headmaster was no better man to realise that a school must change with the times.



The School is very excited to look forward to the Coach House Development: this first phase of the 'Towards 100' initiative. Collaborative spaces, science, technology and creative hubs with multi-functional rooms will allow us to realise the vision of a truly personalised education. While the teacher inspires curiosity in their students, the physical environment also plays its part, enabling every pupil to reach their full potential. The new development will give our girls and boys the opportunity to enjoy challenging and exciting learning experiences across the curricular spectrum, from the scientific to the artistic. The Coach House Development will help create a modern learning space where innovative teachers and happy pupils can work together, in a school of which we will all be proud.

Tony Kilcommons, C.E.O. (former Junior School Principal)

At St. Conleth's, we always strive to ensure that our students are the best they can be and our proposed Coach House Development will give our young men and women greater opportunities to fulfil their potential. Our science, technology and arts centre will ensure that we are always at the cutting edge of new learning and creative experiences. Our auditorium will give our students an arena to showcase their musical and oratorical talents. And our sacred space will provide a much-needed area to complete a holistic education. This new development will afford us, as a school community, the space and environment we need as we face the challenges providing an adaptive education in an ever-changing world.

Donal Ó Dúlaing, *Senior School Principal*

Next?

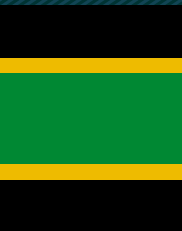
Depending on your particular era, news of recent Conlethian sporting prowess may have come as a pleasant surprise. Rugby, basketball, hockey, fencing, athletics... we now compete on many fields of glory and our post-Coach House plans include a 'field' of our own, up where the Ballsbridge branches aspire towards the skies: a Roof-Top Sports and Recreation Zone. St. Conleth's development is permanently ongoing because the challenges of a providing a modern education are ever-changing.





While **St. Conleth's College** is charging full-speed towards its centennial, its **ethos** and **essence** remain the same: twin fuels that drive a unique tradition in Irish education.





St. Conleth's TOWARDS 100
College

www.stconleths.ie